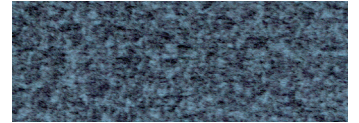
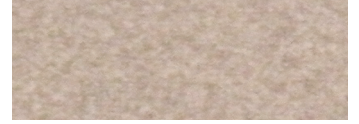




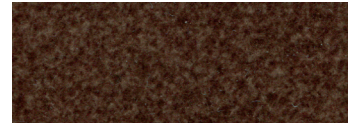
Standard Fabrics:



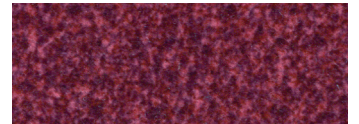
Calypso (TCP)



Camel (TCM)



Hazelnut (THA)



Shiraz (TSZ)



Sterling (TST)

This fabric has a modern, updated look with rich color options. It features our exclusive SofTouch™ with Stain Defense coating.

* An upcharge will apply for all crossover fabrics.

Relaxer PR766



Comfort Zone™
by GOLDEN

The Relaxer is the original power lift chair recliner featuring our patented MaxiComfort® Ultimate Recline Technology standard! The Relaxer model is a true Golden customer favorite, now with a design refresh with modern, well-appointed features like super plush rounded armrests, an adjustable three-pillow waterfall back, an updated pocket style, and an extra wide chaise pad for better lower leg support. Every MaxiComfort® chair comes standard with our exclusive AutoDrive™ 3.0 hand control to make reclining the chair into your favorite position a breeze!

Standard Features:

- Patented MaxiComfort® Positioning
- Programmable AutoDrive™ Hand Control
- Extra Pocket
- SmartTek® Diagnostic System



MAXICOMFORT® Series PR766

Model Number	PR766-SMA	PR766-MED	PR766-LAR
Size	Small	Medium	Large
Class II Medical Device	YES	YES	YES
Weight Capacity	375 LB	375 LB	375 LB
Positioning	MaxiComfort	MaxiComfort	MaxiComfort
Comfort Zone(s)	2	2	2
Twilight Technology	NO	NO	NO
ZG+	NO	NO	NO
Chaise Seat	YES	YES	YES
Pocketed Coil Seat	YES	YES	YES
Back Type	3 Pillow	3 Pillow	3 Pillow
Removable Back Type	Bolt	Bolt	Bolt
Head Rest Cover	Standard	Standard	Standard
Arm Rest Covers	Standard	Standard	Standard
Overall Width	34"	36"	38.5"
Overall Height	41.5"	44.5"	48"
Seat Width	18.5"	20.5"	22.5"
Floor to Top of Seat	19.5"	20"	22"
Seat Depth	19.5"	20.5"	22.5"
Seat to Top of Back	26"	28.5"	29.5"
Seat to Top of Arm	6"	5"	5.5"
Distance Required from Wall Reclined	21"	26"	27"
Extension Reclined from Back of Seat to End of Foot Rest	43"	44"	47"
Life Time Warranty, Chair Frame, Lift Frame, Recline Mechanism	YES	YES	YES
Warranty on Electrical Parts	3 YR	3 YR	3 YR
Pro Rated Years 4 Thru 7	YES	YES	YES
Warranty on Mechanical Labor	3 YR	3 YR	3 YR
Warranty on Electrical Labor	1 YR	1 YR	1 YR
Hand Control Routing	Inside Pocket	Inside Pocket	Inside Pocket
Extra Pocket Option	Standard	Standard	Standard
Heat & Vibrating Massage Option	YES	YES	YES
HeatWave Technology Option	NO	NO	NO
Articulating Headrest Option	NO	NO	NO
Power Adjustable Lumbar Option	NO	NO	NO
Foot Rest Extension Option	NO	YES	YES
Straight Lift Option	Standard	Standard	Standard
USB Charging Port	NO	NO	NO
Battery Backup	9 volt	9 volt	9 volt
SmartTek Diagnostic System	Standard	Standard	Standard
Place of Origin	USA	USA	USA



**Upgrade with
Deluxe Therapeutic
Heat & Massage!**



Shown in Hazelnut

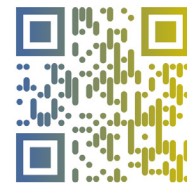
Comfort Zone™ by GOLDEN

Comfort Zones 1 & 2 work together to create individualized wellness positioning and comfort. Each Comfort Zone can be adjusted independently by using the exclusive AutoDrive hand control.



LOWER BODY UPPER BODY HEADREST LUMBAR TWILIGHT TILT

WE PATENTED COMFORT™



Scan with your smartphone camera to learn more about Comfort Zone by Golden.



Phone: 800-624-6374
Fax: 800-628-5165
www.goldentech.com



Literature is current at time of printing. Golden Technologies reserves the right to make changes to the product or literature at any time.

Sizes may vary depending on fabric, filling material, upholstery and carpet thickness. All measurements taken on concrete floor using levels and metal rulers.



Complies with
UL 73 and
CSA C22.2 No. 68



www.facebook.com/goldentechnologies

SHT-PR766-010824