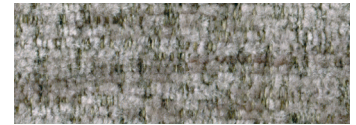


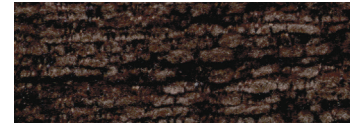


Shown in Anchor

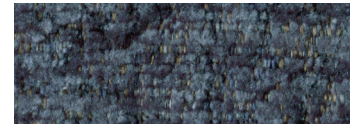
Standard Fabrics:



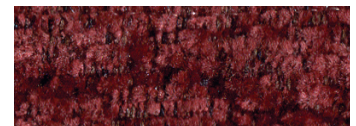
Anchor



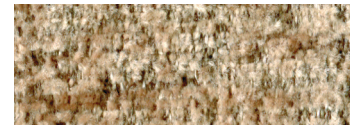
Bittersweet



Oxford



Port



Sandstorm

This fabric has a modern, updated look with rich color options. It features our exclusive SofTouch™ with Stain Defense coating.

* An upcharge will apply for all crossover fabrics.

MaxiComforter PR535



Comfort Zone™
by GOLDEN

An old favorite meets new upgrades in the MaxiComforter power lift recliner! Our long-standing, Small-to-Tall size collection now features a contemporary design and plush fabric offerings! Refreshed features include a new arm style with additional padding for more comfort and value, extended arms to provide better ease of use while entering or exiting the chair while lifted, a new back style for maximum comfort, and a tasteful new seam design. Plus, Golden's most sought-after signature seat for the utmost in support and comfort. Available in luxurious chenille fabrics with a new upgraded stain defense. Comfort comes from custom tailoring. Find your size today!

Standard Features:

- Patented MaxiComfort® Positioning
- Programmable AutoDrive™ Hand Control (excluding PR535-MXW)
- Extra Pocket
- Upgraded Stain Defense
- SmartTek® Diagnostic System

Upgrade Options:

- Deluxe Therapeutic Heat & Vibrating Massage



MAXICOMFORT® Series

PR535

Model Number	PR535-PSA	PR535-MED	PR535-LAR	PR535-TAL	PR535-MXW*	PR535-LXW
Size	Petite/Small	Medium	Large	Tall	Medium/Wide	Large/Wide
Class II Medical Device	YES	YES	YES	YES	YES	YES
Weight Capacity	375 LBS	375 LBS	375 LBS	375 LBS	500 LBS	600 LBS
Positioning	MaxiComfort	MaxiComfort	MaxiComfort	MaxiComfort	MaxiComfort	MaxiComfort
Comfort Zone(s)	2	2	2	2	2	2
Twilight Technology	NO	NO	NO	NO	NO	NO
ZG+	NO	NO	NO	NO	NO	NO
Chaise Seat	YES	YES	YES	YES	YES	YES
Pocketed Coil Seat	YES	YES	YES	YES	NO	NO
Back Type	Seam	Seam	Seam	Seam	Seam	Seam
Removable Back Type	Quick Release	Quick Release	Quick Release	Quick Release	Quick Release	Quick Release
Head Rest Cover	Standard	Standard	Standard	Standard	Standard	Standard
Arm Rest Covers	Standard	Standard	Standard	Standard	Standard	Standard
Overall Width	32"	32"	34"	34"	38"	40"
Overall Height	40"	42"	43"	48"	45"	44.5"
Seat Width	21"	21"	23"	23"	27"	29"
Floor to Top of Seat	20"	20"	21"	23"	20"	20"
Seat Depth	19"	19"	21"	21"	20"	21.5"
Seat to Top of Back	26"	27"	29"	31"	30"	30"
Seat to Top of Arm	6"	5"	6"	6"	5"	7.5"
Distance Required from Wall Reclined	22"	23"	25"	26"	25"	21"
Extension reclined from Back of Seat to End of Foot Rest	40"	41"	42"	45"	43"	43"
Life Time Warranty, Chair Frame, Lift Frame, Recline Mechanism	YES	YES	YES	YES	YES	YES
Warranty on Electrical Parts	3 YR	3 YR	3 YR	3 YR	3 YR	3 YR
Pro Rated Years 4 Thru 7	YES	YES	YES	YES	YES	YES
Warranty on Mechanical Labor	3 YR	3 YR	3 YR	3 YR	3 YR	3 YR
Warranty on Electrical Labor	1 YR	1 YR	1 YR	1 YR	1 YR	1 YR
Hand Control Routing	Inside Pocket	Inside Pocket	Inside Pocket	Inside Pocket	Inside Pocket	Inside Pocket
Extra Pocket Option	Standard	Standard	Standard	Standard	Standard	Standard
Heat & Vibrating Massage Option	YES	YES	YES	YES	YES	YES
HeatWave Technology Option	NO	NO	NO	NO	NO	NO
Articulating Headrest Option	NO	NO	NO	NO	NO	NO
Power Adjustable Lumbar Option	NO	NO	NO	NO	NO	NO
Foot Rest Extension Option	YES	YES	YES	YES	YES	YES
Straight Lift Option	Standard	Standard	Standard	Standard	Standard	Standard
USB Charging Port	NO	NO	NO	NO	NO	NO
Battery Backup	9 volt	9 volt	9 volt	9 volt	Lithium-ion	Lithium-ion
SmartTek Diagnostic System	Standard	Standard	Standard	Standard	Standard	Standard
Place of Origin	USA	USA	USA	USA	USA	USA



Upgrade with Deluxe Therapeutic Heat & Massage!

NEW LARGE WIDE MODEL



Up to 600 lb. Weight Capacity!

Shown in Anchor



*The PR535-MXW does not feature our AutoDrive functionality.



Comfort Zone™

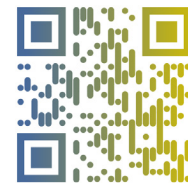
by GOLDEN

Comfort Zones 1 & 2 work together to create individualized wellness positioning and comfort. Each Comfort Zone can be adjusted independently by using the exclusive AutoDrive™ hand control (*excluding PR535-MXW).



LOWER BODY UPPER BODY HEADREST LUMBAR TWILIGHT TILT

WE PATENTED COMFORT™



Scan with your smartphone camera to learn more about Comfort Zone by Golden.



Phone: 800-624-6374
Fax: 800-628-5165
www.goldentech.com



Literature is current at time of printing. Golden Technologies reserves the right to make changes to the product or literature at any time.

Sizes may vary depending on fabric, filling material, upholstery and carpet thickness. All measurements taken on concrete floor using levels and metal rulers.



Complies with UL 73 and CSA C22.2 No. 68



www.facebook.com/goldentechnologies

SHT-PR535-011224